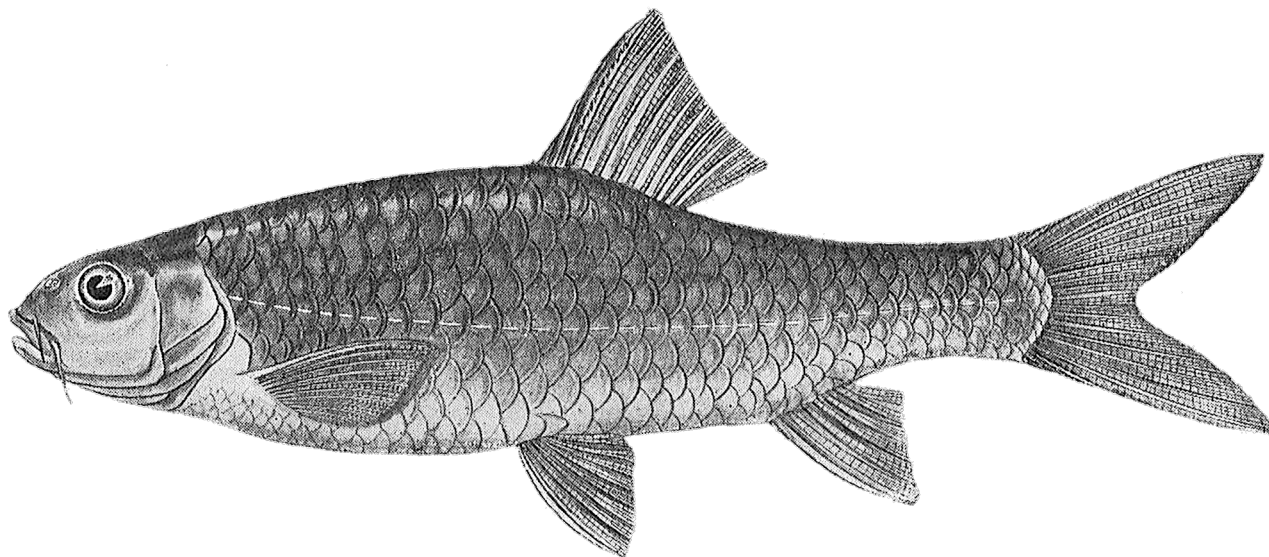


Order CYPRINIFORMES

Spine Barbs

Family **CYPRINIDAE**
Subfamily **SPINIBARBINAE** Yang et al. 2015¹



Spinibarbichthys yunnanensis. From: Wu, H.-W., R.-D. Lin, Q.-X. Chen, X.-L. Chen and M.-Q. He. 1977. Barbinae. Pp. 229–394. In: H.-W. Wu (ed.). The cyprinid fishes of China. Vol. 2. Science Press, Peking.

Spinibarbichthys

Oshima 1926

“closely allied” to *Spinibarbus*; *ichthys* (Gr. ἰχθύς), fish

***Spinibarbichthys denticulatus* Oshima 1926** Latin for having small teeth (denticulate), allusion not explained, possibly referring to its serrate dorsal spine

***Spinibarbichthys maensis* (Nguyen, Duong & Tran 2007) -ensis**, Latin suffix denoting place: Ma River, Camthuy district, Thanh Province, Vietnam, type locality

***Spinibarbichthys nguyenhuuduci* (Nguyen, Do, Nguyen & Nguyen 2015)** in honor of Nguyen Huu Duc, Hanoi National University of Education, who co-described *Spinibarbus brevicephalus* and *S. vittatus* in 1997

***Spinibarbichthys nigripinnis* (Nguyen, Do, Nguyen & Nguyen 2015)** *nigri*, from *niger* (L.), black; *pinnis*, scientific Neo-Latin adjective of *pinna* (L.), fin, i.e., finned, referring to its characteristic dark or black fins

***Spinibarbichthys nigriventralis* (Nguyen & Vu 2012)** *nigri*, from *niger* (L.), black; *ventralis* (L.), of the belly (ventral), referring to black tip on light-pink ventral fins

***Spinibarbichthys ovalius* (Nguyen & Ngo 2001)** presumably an alternative spelling of *ovalis* (L.), oval, allusion not explained, probably referring to its “high and short” (translation) body, which appears oval in the figured specimen

***Spinibarbichthys yunnanensis* (Tsü 1977) -ensis**, Latin suffix denoting place: Yunnan Province, China, where it is endemic

Spinibarbus

Oshima 1919

spinis, from *spinus* (L.), thorn, referring to forward-pointing “recumbent” spine in front of dorsal fin of *S. hollandi*; *barbus* (L.),

beard, but probably used here as a standard suffix for a barbeled cyprinid (e.g., *Barbus*)

***Spinibarbus babeensis* Nguyen 2001 -ensis**, Latin suffix denoting place: Ba Bê Lake, Bắc Kan, Vietnam, type locality

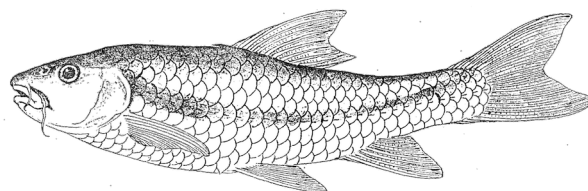
***Spinibarbus brevicephalus* Nguyen & Nguyen 1997** short-headed, from *brevis* (L.), short, and *kephalē* (Gr. κεφαλή), head, referring to its shorter head length compared with *S. hollandi* and *S. vittatus*

***Spinibarbus caldwelli* (Nichols 1925)** in honor of Harry R. Caldwell (1876–1971), American hunter, naturalist and Methodist missionary to China, who collected holotype

***Spinibarbus hoenoti* Nguyen, Do, Nguyen & Nguyen 2015** in honor of Ho Enot, a member of the Van Kieu (Bru) ethnic group and leader of Cu Pua commune of Dakrong commune, Dakrong district, Quang Tri province, Vietnam, who collected fishes for the Highland Aquatic Resources Conservation and Sustainable Development project

***Spinibarbus hollandi* Oshima 1919** in honor of Jamaican-born American zoologist-paleontologist William J. Holland (1848–1932), Director of the Carnegie Museum, in whose journal Oshima’s paper was published

***Spinibarbus polylepis* Chu 1989** *polý* (Gr. πολύ), many; *lepis* (Gr. λεπίς), scale, referring to more scales on lateral line and predorsal space than *Spinibarbichthys denticulatus*, its presumed congener at the time



Spinibarbus vittatus. From: Nguyen, H. D. and V. H. Nguyen. 1997. The genus *Spinibarbus* of Vietnam, with descriptions of two new species. Tap Chi Khoa Hoc (Journal of Science, Vietnam National University, Hanoi) 13 (4): 22–29.

¹ Full authorship credit is Yang, Sado, Hirt, Pasco-Viel, Arunachalam, Li, Wang, Freyhof, Saitoh, Simons, Miya, He & Mayden 2015.

2 · The ETYFish Project

***Spinibarbus sinensis* (Bleeker 1871)** *-ensis*, Latin suffix denoting place: Sinica (China), where it is endemic to the Yangtze River

***Spinibarbus vittatus* Nguyen & Nguyen 1997** Latin for banded, referring to black lateral band from behind gill cover to caudal fin