

Order RAJIFORMES

Smooth Skates

Family **ANACANTHOBATIDAE**

von Bonde & Swart 1923



Anacanthobatis marmorata. From: von Bonde, C. and D. B. Swart. 1923. The Platosomia (skates and rays) collected by the S. S. "Pickle." Report Fisheries and Marine Biological Survey, Union of South Africa Rep. 3 (art. 5): 1–22, Pls. 20–23.

Anacanthobatis

von Bonde & Swart 1923

ἀ-, Greek privative, i.e., without; *acantho-*, from *ákantha* (Gr. ἄκανθα), thorn, referring to its smooth skin; *batis* (Gr. βατίς), a flat fish, usually applied to a skate or ray

Anacanthobatis marmorata (von Bonde & Swart 1923) Latin for marbled, referring to profuse mottling of very small, round white spots

Indobatis

Weigmann, Stehmann & Thiel 2014

Indo-, prefix for India or Indian Subcontinent, referring to its distribution in the western Indian Ocean; *batis* (Gr. βατίς), a flat fish, usually applied to a skate or ray

Indobatis ori (Wallace 1967) acronym of the Oceanographic Research Institute (Durban, South Africa), where Wallace worked

Schroederobatis

Hulley 1973

patronym not identified but clearly in honor of American ichthyologist William C. Schroeder (1895–1977), Woods Hole Oceanographic Institution, junior author of *S. americana*; *batis* (Gr. βατίς), a flat fish,

usually applied to a skate or ray

Schroederobatis americana (Bigelow & Schroeder 1962) *-ana* (L.), belonging to: America, referring to its distribution off the Atlantic coasts of Central and South America

Sinobatis

Hulley 1973

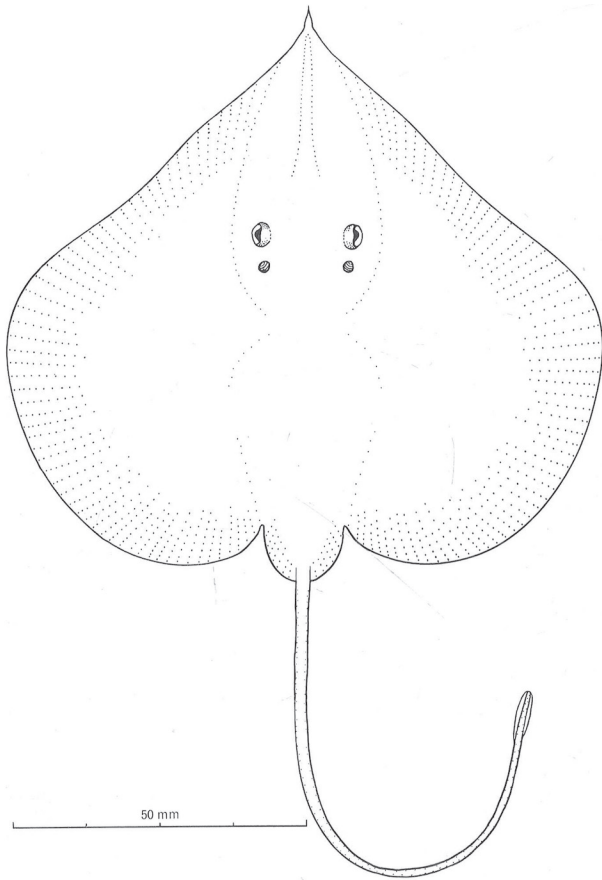
Sino-, prefix for Sinica (China), probably referring to South China Sea distribution of *S. melanosoma* and *S. borneensis*; *batis* (Gr. βατίς), a flat fish, usually applied to a skate or ray

Sinobatis andamanensis Last & Bussarawit 2016 *-ensis*, Latin suffix denoting place: Andaman Sea, northeastern Indian Ocean, type locality

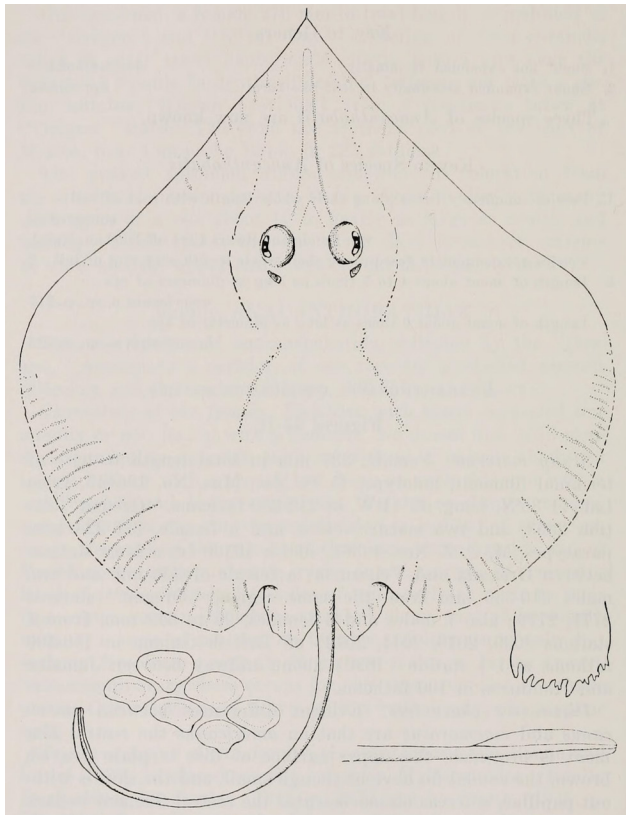
Sinobatis borneensis (Chan 1965) *-ensis*, Latin suffix denoting place: Borneo, referring to type locality near Sarawak, Borneo, in the South China Sea

Sinobatis brevicauda Weigmann & Stehmann 2016 *brevis* (L.), short; *cauda* (L.), tail, referring to its much shorter tail compared with other species in the family

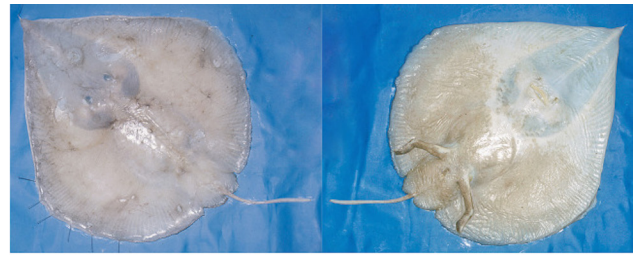
Sinobatis bulbicauda Last & Séret 2008 *bulbus* (L.), a swelling; *cauda*



Indobatis ori, holotype, female, 206 mm TL. From: Wallace, J. H. 1967. The batoid fishes of the east coast of southern Africa. Part 3: skates and electric rays. Investigational Report. Oceanographic Research Institute, Durban No. 17: 1–62.



Schroederobatis americana, holotype, female, 337 mm TL. Illustration by E. N. Fischer. From: Bigelow, H. B. and W. C. Schroeder. 1962. New and little known batoid fishes from the Western Atlantic. Bulletin of the Museum of Comparative Zoology 128 (4): 161–244, Pl. 1.



Sinobatis brevicauda, paratype, female, 568 mm TL, dorsal (left) and ventral (right) views, directly after capture. From: Weigmann, S. and M. F. W. Stehmann. 2016. *Sinobatis brevicauda* n. sp., a new deep-water legskate (Rajiformes, Anacanthobatidae) and first generic record from the western Indian Ocean. Zootaxa 4137 (4): 478–500.

(L.), tail, referring to flattened expansion of tail near its tip

Sinobatis caerulea Last & Séret 2008 Latin for dark blue, referring to blue dorsal and ventral coloration

Sinobatis filicauda Last & Séret 2008 *filum* (L.), thread; *cauda* (L.), tail, referring to thread-like tail tip

Sinobatis kotlyari Stehmann & Weigmann 2016 in honor of ichthyologist Alexander Kotlyar (b. 1950), P. P. Shirshov Institute of Oceanology, Russian Academy of Sciences, who collected holotype in 1979; through his “kind assistance” the authors were able to “reconstruct and verify from his original logbook” the type locality

Sinobatis melanosoma (Chan 1965) *mélanos* (Gr. μέλανος), genitive of *mélas* (μέλας), black; *sōma* (Gr. σώμα), body, referring to its dorsally blackish to blackish-brown disc

Sinobatis stenosoma (Li & Hu 1982) *sténos* (Gr. στένος), narrow; *sōma* (Gr. σώμα), body, referring to its long and narrow disc

Springeria

Bigelow & Schroeder 1951

-*ia* (L. suffix), belonging to: American ichthyologist Stewart Springer (1906–1991), for his “productive studies of the elasmobranchs of Florida and the Gulf [of Mexico]”

Springeria folirostris Bigelow & Schroeder 1951 *foli-*, from *folium* (L.), leaf; *rostris*, from *rostrum* (L.), snout, referring to the “peculiar” leaf-like extension at the end of its snout

Springeria longirostris (Bigelow & Schroeder 1962) *longus* (L.), long; *rostris*, Neo-Latin scientific adjective of *rostrum* (L.), snout, referring to its longer snout compared with *Schroederobatis americana*, its presumed congener at the time



Springeria folirostris, holotype, immature male, 400 mm TL, composite illustration showing both dorsal and ventral surfaces. From: Bigelow, H. B. and W. C. Schroeder. 1951. A new genus and species of anacanthobatid skate from the Gulf of Mexico. Journal of the Washington Academy of Sciences 41 (3): 110–113.