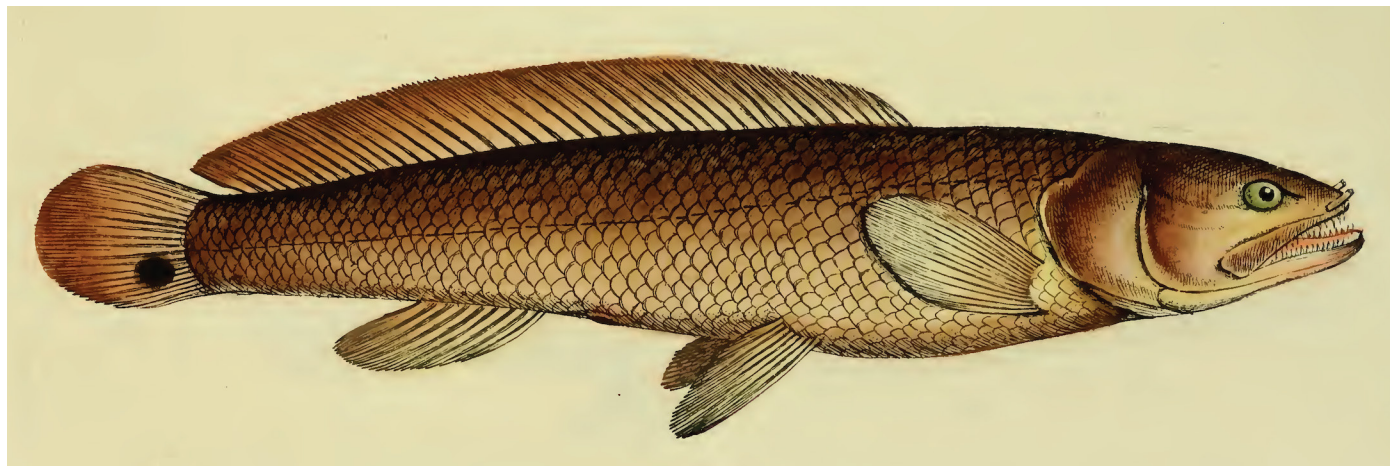


Order AMIIFORMES

Bowfins

Family **AMIIDAE**

Bonaparte 1831



Possibly first-published image of *Amia calva* (with eyespot incorrectly placed at lower caudal fin instead of upper caudal-fin base). Illustration by Johann Friedrich Hennig. From: Bloch, M. E. and J. G. Schneider. 1801. M. E. Blochii, Systema Ichthyologiae Iconibus ex Illustratum. Post obitum auctoris opus inchoatum absolvit, correxit, interpolavit Jo. Gottlob Schneider, Saxo. Berolini. Sumtibus Auctoris Impressum et Bibliopolio Sanderiano Commissum. i–lx + 1–584, Pls. 1–110.

***Amia***

Linnaeus 1766

meaning unknown, presumably derived from *amia*, an ancient name for an unknown fish, thought to be a bonito or a kind of “tunny” (e.g., Atlantic Bonito *Sarda sarda*) since the Renaissance but now identified as the Bluefish *Pomatomus saltatrix*<sup>1</sup>

***Amia calva* Linnaeus 1766** Latin for bald, probably referring to its scaleless head

***Amia ocellicauda* Richardson 1836**<sup>2</sup> *ocellus*, diminutive of *oculus* (L.), eye (but here meaning eyespot); *cauda* (L.), tail, referring to “irregular round spot of the size of a shilling, bordered with scarlet at the base of the seven upper caudal rays”

<sup>1</sup> Lytle, E. 2016. One fish, two fish, bonito, bluefish: Ancient Greek *ἀμία* and *γομφάριον*. *Mnemosyne* 69: 241–269.

<sup>2</sup> Authorship sometimes incorrectly given as Todd (in Richardson) 1836; while Todd’s description is quoted, Richardson supplied the name and made it available.